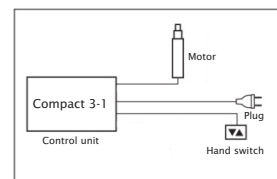


CONTROLLER COMPACT

Controller Compact 3-1

for one motor/lifter

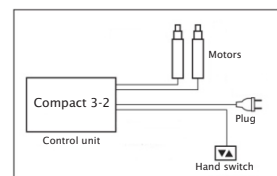
For one motor



Controller Compact 3-2

for two motors/lifters or 4x Compact 3-2 linked for synchronous operation of 8 motors/lifters

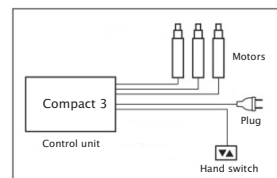
For two motors



Controller Compact 3-3

for three motors/lifters or 4x Compact 3-3 linked for synchronous operation of 12 motors/lifters

For three motors



Controllers		Compact 3-1	Compact 3-2	Compact 3-3
Article number		COM1-XX-S-7M-EU	COM2-XX-S-7M-EU	COM3-XX-S-7M-EU
Technical data	Unit			
Output power	VA	360	360	360
Input voltage	VAC	230	230	230
Power consumption	A	1,6	1,6	1,6
Frequency	Hz	50	50	50
Protection class		I	I	I
Protection rate IP		20	20	20
Output voltage	VDC	24	24	24
Motor channels		1	2	3
Duty cycle		1 / 9 (10 %)	1 / 9 (10 %)	1 / 9 (10 %)
Power supply electronics	VDC/mA	5 / 250	5 / 250	5 / 250
Power supply standby	VDC/mA	5 / 004	5 / 004	5 / 004
Standby power input	W	< 0,3	< 0,3	< 0,3
Number of controllers linkable		max. 4	max. 4	max. 4
Weight	kg	0,523	0,523	0,523
Size	mm	264x103x37	264x103x37	264x103x37
Plug type / Cable length				
Power supply cable	m	3	3	3
Output Motor		Molex Mini Fit Jr.	Molex Mini Fit Jr.	Molex Mini Fit Jr.
Output Manual switch		MAS 70 S	MAS 70 S	MAS 70 S

*110 V-Version on demand

CONTROLLER COMPACT - MANUAL SWITCH

**Manual Switch
HS-Baseline LD/7**



Article number	HS Baseline LD7
Mounting	Hook
Memory	No
Display	No
Cable length	1,5 m - 2,8 m
Motorgroups	1
Plug type	MAS 70

**Manual Switch
HSX-OD-2-LD**



Article number	HSX-OD-2-LD
Mounting	Under desk mounting
Memory	No
Display	No
Cable length	1,6 m
Motorgroups	1
Plug type	MAS 70

**Manual Switch
HSM-OD**



Article number	HSM-OD
Mounting	Under desk mounting
Memory	No
Display	No
Cable length	1,8 m
Motorgroups	1
Plug type	MAS 70

**Manual Switch
HSU-C-FL-LD**



Article number	HSU-C-FL-LD
Mounting	Under desk mounting
Memory	4 positions
Display	3 digit LCD
Cable length	1,8 m
Motorgroups	1
Plug type	MAS 70

CONTROLLER COMPACT - MANUAL SWITCH

Manual switch TOUCH-IL-MDF-2M2-LD



Article number	TOUCH-IL-MDF-2M2-LD
----------------	---------------------

Mounting	Built-in
Memory	2 positions
Display	4 digit LCD
Cable length	1,8 m
Motorgroups	2
Plug type	MAS 70

Manual switch HSF-MDF-4M4-LD



Article number	HSF-MDF-4M4-LD
----------------	----------------

Mounting	Under desk mounting
Memory	4 positions
Display	4 digit LCD
Cable length	2,2 m
Motorgroups	2
Plug type	MAS 70

Foot switch EL-Fuss LDII/7



Article number	EL-Fuss LDII/7
----------------	----------------

Memory	No
Display	No
Motorgroups	1
Cable type	Coiled cable max. 1,7 m
Plug type	MAS 70

CONTROLLER COMPACT - ACCESSOIRES

Power supply cable

Article number	LOG-CBL-PWK
Application	Connecting controller to power supply
Cable length	3 m
Pins	3
Cable plug	EU - power plug



Manual switch extension cable

Article number	ACS-CBL-HS-LD
Application	Connecting hand switch to controller
Cable length	1,0 m
Cable plug	MAS 70
	max. 3 cables (length 3,0 m)



Motor connecting cable Molex to MAS

Article number	LOG-CBL-ADAP-Mot-ELS
Application	Connecting motor/lifter to controller
Cable length	0,2 m
Cable plug	MAS 80S / Molex Mini Fit 4.2mm plug



Motor extension cable MAS

Article number	ACS-CBL-Mot-1,5m
Application	Connecting motor/lifter to controller
Cable length	1,5 m
Cable plug	MAS 80
	max. 3 cables (length 4,5 m)



Motor connecting cable MAS to Molex

Article number	LOG-CBL-ADAP-INV-Mot
Application	Connecting motor/lifter to controller
Cable length	0,2 m
Cable plug	MAS 80S / Molex Mini Fit 4.2mm plug



Motor extension cable Molex

Article number	EZ02490
Application	Connecting motor/lifter to controller
Cable length	1,2 m
Cable plug	Molex Mini Fit 4.2mm plug/socket



Hand switch split cable

Article number	ACS-CBL-HSY
Application	Connection two hand switches to controller
Cable length	0,2 m
Cable plug	MAS 70



Link cable for two controllers

Article number	ACS-CBL-HT-SYNC-500
Application	Linking/Connection
Number linkable controllers	2
Controller type	Compact
Length	0,5 m



Motorcable HEXALIFT + VISOLIFT

Article number	EZ02252
Application	Connecting motor/lifter to controller
Cable length	2 m
Plug type	Molex



Link cable for four controllers

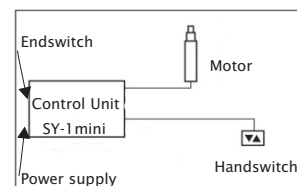
Article number	ACS-CBL-HT-SYNC-1500
Application	Linking/Connection
Number linkable controllers	max. 4
Controller type	Compact
Length	1,5 m



CONTROLLERS SY 1 MINI

Controller SY 1 mini

for one motor/lifter



Controllers Article number	Unit	SY1mini, with power supply 27V SYM1-ON-S-78-27	SY1mini, no power supply 27V SYM1-ON-O-78-27	SY1mini, with power supply 12V SYM1-ON-S-78-12	SY1mini, no power supply 12V SYM1-ON-O-78-12
Technical datas					
Output power	VA	180	180	180	180
Input voltage	VDC	12-36	12-36	12-36	12-36
Output voltage	VDC	27	27	12	12
Power consumption	A	max 5,0	max 5,0	max 5,0	max 5,0
Protection class		II	II	II	II
Protection rate IP		20	20	20	20
Motor channels		1	1	1	1
Duty cycle		1 / 9 (10 %)	1 / 9 (10 %)	1 / 9 (10 %)	1 / 9 (10 %)
Weight	kg	0,075	0,37	0,075	0,37
Size	mm	95,6 x 55,4 x 30,5	95,6 x 55,4 x 30,5	95,6 x 55,4 x 30,5	95,6 x 55,4 x 30,5
Plug type					
Output - Motor		MAS 80 S	MAS 80 S	MAS 80 S	MAS 80 S
Output - Manual switch		MAS 70 S	MAS 70 S	MAS 70 S	MAS 70 S
Output - End switch		MAS 50 S (optional)	MAS 50 S (optional)	MAS 50 S (optional)	MAS 50 S (optional)
Power supply		DC power connector 2,5mm	DC power connector 2,5mm	DC power connector 2,5mm	DC power connector 2,5mm

CONTROLLER SY1 MINI - MANUAL SWITCH

**Manual switch
HS-Baseline LD/7**



Article number **HS Baseline LD7**

Mounting	Hook
Memory	No
Display	No
Cable length	1,5m - 2,8m
Motorgroups	1
Plug type	MAS 70

**Manual switch
HSX-OD-2-LD**



Article number **HSX-OD-2-LD**

Mounting	Under desk mounting
Memory	No
Display	No
Cable length	1,6m
Motorgroups	1
Plug type	MAS 70

**Manual switch
HSM-OD**



Article number **HSM-OD**

Mounting	Under desk mounting
Memory	No
Display	No
Cable length	1,8m
Motorgroups	1
Plug type	MAS 70

**Manual switch
HSU-C-FL-LD**



Article number **HSU-C-FL-LD**

Mounting	Under desk mounting
Memory	4 positions
Display	3 digit LCD
Cable length	1,8m
Motorgroups	1
Plug type	MAS 70

CONTROLLER SY1 MINI - ACCESSOIRES

Hand switch split cable



Article number	ACS-CBL-HSY
Application	Connects 2 manual switches and controller
Cable length	0,2m
Useable with controller type	Compact/SYmini/Smart
Useable with manual switch	LD, Touch series
Plug type	MAS 70

Hand switch extension cable



Article number	ACS-CBL-HS-LD
Application	Connects manual switch and controller
Cable length	1,0m
Useable with controller type	Compact/SYmini/Smart
Useable with manual switch	LD und Touch series
Plug type	MAS 70

Motor extension cable

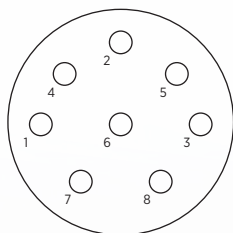


Article number	ACS-CBL-Mot-1,5m
Application	Connects motor and controller
Cable length	1,5m
Useable with controller type	Compact/SCT/SYmini/Smart
Useable with manual switch	
Plug type	MAS 80

Motor cable Compact / SY/SCT

1. a. 7 = Motor + (-), (yellow) up/down
2. a. 4 = Motor - (+), (grey) up/down
- 5 = Hall Transmitter Gnd (brown)
- 3 = Hall Transmitter + 5 V (white)
- 8 = Hall Transmitter 1
open collector output (green)
- 6 = Hall Transmitter 2
open collector output (blue)

Soldering side plug

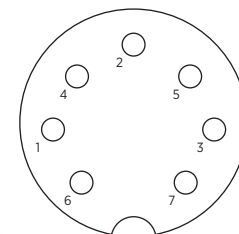


MAS80S DIN 41524

Manual Switch Compact / SY

Code	HS 1	HS 2	HS 3	HS 4
Up	1	0	0	0
Down	0	1	0	0
Memo	0	1	1	0
Pos 1	0	0	1	0
Pos 2	0	0	0	1
Pos 3	0	1	0	1
Pos 4	0	1	1	0
Pos 5	0	1	0	1
Pos 6	0	1	1	1

Soldering side



MAS70S DIN 45329

Configuration	4 = HS 4
1 = Rx D	5 = HS 2
2 = HS 3	6 = Tx D
3 = HS 1	7 = +5V

CONTROLLER SYNCONTROL

Controller Syncontrol

for up to four motors/lifters



Controllers Article number		SYC3-ON-S-RM- EU-XXXX	SYC3-ON-S-RM-EU- GXWX	SYC4-ON-S-RM-EU- XXXX	SYC4-ON-S-RM-EU- GXWX
Technical datas	Unit				
Power	W	380	380	380	380
Input voltage	VAC	230	230	230	230
Current consumption	A	2	2	2	2
Frequency	Hz	50	50	50	50
Protection class		I	I	I	I
Protection rate IP		20	20	20	20
Output voltage	VDC	24	24	24	24
Power consumption	A	19	19	19	19
Motor channels		3	3	4	4
Max. power consumption/channel	A	9	9	9	9
Continous operation up to	W	100 total load	100 total load	100 total load	100 total load
Power supply standby	W	0,1	0,1	0,1	0,1
Duty cycle		1/9 (10%)	1/9 (10%)	1/9 (10%)	1/9 (10%)
Number of controllers linkable		6	6	8	8
Weight	kg	0,46	0,46	0,46	0,46
Size	mm	41x61x265	41x61x265	41 x 61 x 265	41 x 61 x 265
Plug type / Cable length					
Power supply cable	m	3	3	3	3
Output Motor		Molex Mini Fit Jr.	Molex Mini Fit Jr.	Molex Mini Fit Jr.	Molex Mini Fit Jr.
Output Manual switch		RJ 12	RJ 12	RJ 12	RJ 12
Modbus		x	x	x	x
Wifi		-	x	-	x
Gyrosense***		-	x	-	x

*110V Version (US) available

**up to 6 controllers linkable with link-hub KAS-HUB-SYC

***Collision sensor optional

Options:

- Bluetooth
- Optosense operation

CONTROLLER SYNCONTROL

Controller Syncontrol Battery and DC



for up to four motors

Controller Article number	2-channel 4-channel	SYC2-ON-S-RM-24-XXXX SYC4-ON-S-RM-24-XXXX	SYC2-ON-S-RM-24-XXXX-BAT SYC4-ON-S-RM-24-XXXX-BAT
Technical datas	Unit		
Power	W	380	380
Input voltage	VDC	24V - 32V	Integrated Battery 86 Wh
Current consumption	A	15 - 20	
Protection class		I	I
Protection rate IP		20	20
Output voltage	VDC	24	24
Power consumption	A	19	19
Motor channels		2 or 4	2 or 4
Max . power consumption / channel	A	12	12
Continous operation up to	W	100 total load	100 total load
Power supply standby	W	0,25	0,1
Duty cycle		1 / 9 (10 %)	1 / 9 (10 %)
Number of controllers linkable		6	6
Weight	kg	0,46	0,85
Size	mm	38,5 x 62 x 265	38,5 x 62 x 303
Plug type / Cable length			
Power supply cable		DC and 5V on/off**	Integrated Battery
Output Motor		Molex Mini Fit Jr.	Molex Mini Fit Jr.
Output Manual switch		RJ 12	RJ 12

Options:

- Modbus
- Wifi
- Bluetooth
- Gyrosense (Collision sensor)

Akku Art.-Nr.: Syc-Akku



Charger
 Art.-Nr.: Syc-Netzladegerät

CONTROLLER SYNCONTROL - MANUAL SWITCH

Manual switch up/down



Article number **HS-SYC-LM2EC**

Mounting	Under desk mounting
Keys up/down	2
Memory	No
Display	No
Cable length	1,7m
Plug type	RJ 12

Manual switch up/down



Article number **HS-SYC-LM2IC**

Mounting	Build in
Keys up/down	2
Memory	No
Display	No
Cable length	1,7m
Plug type	RJ 12

Manual switch up/down with Display

Für Linkbetrieb geeignet.



Article number **HS-SYC-LD2IC**

Mounting	Build in
Keys up/down	2
Memory	No
Display	Yes
Cable length	1,7m
Plug type	RJ 12

Manual switch 2 Memory positions



Article number **HS-SYC-LM4IC**

Mounting	Build in
Keys up/down	2
Memory	2 positions
Display	No
Cable length	1,7m
Plug type	RJ 12

Manual switch 2 memory positions with display

usable for cascading



Article number **HS-SYC-LD6EC**

Mounting	Under desk mounting
Keys up/down	2
Memory	4 positions
Display	3 digit LCD
Cable length	1,7m
Plug type	RJ 12

CONTROLLER SYNCONTROL - ACCESSOIRES

Power supply cable Controller



Article number	LOG-CBL-PWK
Application	Connecting controller to power supply
Cable length	3 m
Pins	3
Plug type	EU - power plug

Motor adapter cable Molex to MAS



Article number	LOG-CBL-ADAP-Mot-ELS
Application	Connecting controller to motor/lifter
Cable length	0,2m
Pins	MAS 80S/Molex Mini Fit 4,2 mm plug

Synchronization connector



Article number	SYC-HS-Y-Verteiler-RJ12
Application	Connecting / Synchronizing 2 x controllers and 1x handset

Hand switch we junction



Article number	HS-Y-Verteiler-RJ12-SYC
Application	Connecting two hand sets to one controller

Link cable



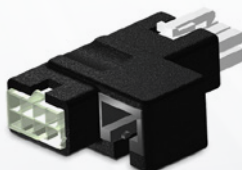
Article number	KAS-Kabel-RJ12-SYC-0,9m
Application	Connects two or more controllers
Cable length	0,9m
Pins	RJ12

Link hub



Article number	KAS-HUB-SYC
Application	Connects up to 6 controllers

Adapter for connector anti-squeeze bar



Article number	Y-Adapter-KS-SYC
Application	Connector anti-squeeze bar

Hub for extension hand set cable



Article number	HS-Kupplung-2xRJ12
Application	Extension hand set cable